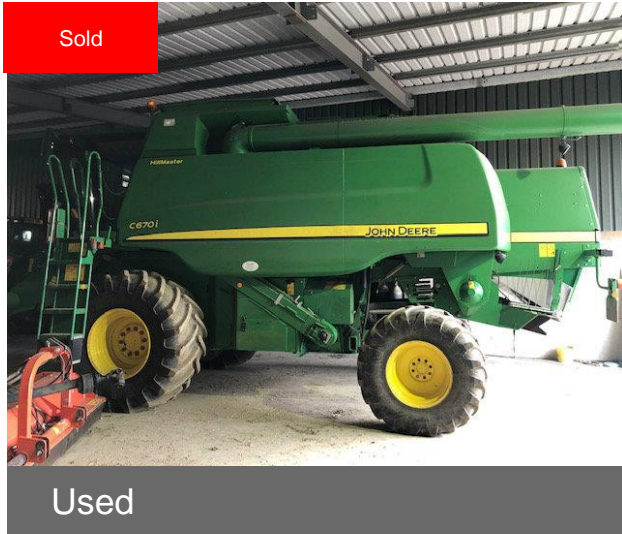


John Deere C670I HILLMASTER



Contact details for Dealer

Branch:	Luton
Branch Phone:	+44 (0)1582 727111
Contact:	William Helliwell
Mobile:	+44 (0)7894 698202
Stock number:	11012998
Export Enquiries:	+44 (0)7894 698202

Machine Specifications

Price	SOLD
Year	2008/MY2009/2010
Make	John Deere
Model	C670I HILLMASTER
Stock Number	11012998
Engine Hours	1504
Cutterbar Type	Standard cutterbar
Cutterbar size (m)	7.5
Drum Hours	1054
Sieves	Standard
Drive Type	Hydro
Road Speed (kph)	25
Front Tyre Size / Condition	Michelin 800/65R32 90%
Rear Tyre Size / Condition	Michelin 480/80R26 90%
Condition	Very good
Header Reverse	✓
Air Conditioning	✓
Yield Meter	✓
Straw Chopper	✓
Chaff Spreader	✓
Yield Mapping	✓

Additional Information:

John Deere C670i HillMaster, (CTS Twin rotor machine), 2008, 2009MY, first registered and used 2010, header is MY2010, Only 1504 engine hours and 1054 drum hours, Has been cutting 300 acres, Registered 2010, Greenstar Ready, Yield monitor, Moisture meter, Fuel meter, Michelin tyres, front 800/65R32 90% and rear 480/80R26, Electronic deflectors for spreader for wind control, New main drive belt last year, Chopper blades need turning, Cab in excellent condition, Elevator slats look straight, Combine is very smart, excellent condition inside and out and very well looked after, Always been on heavy clay soil, no stones, Engine oil and filters are done, John Deere 625R cutterbar, 25' standard, Cutterbar year 2010, Nice clean and straight, Auger straight, Reel excellent (new 2 seasons ago), Good knife, Marston Trailers trolley, year 2010, serial 216702, with tandem axle and extendable drawbar

