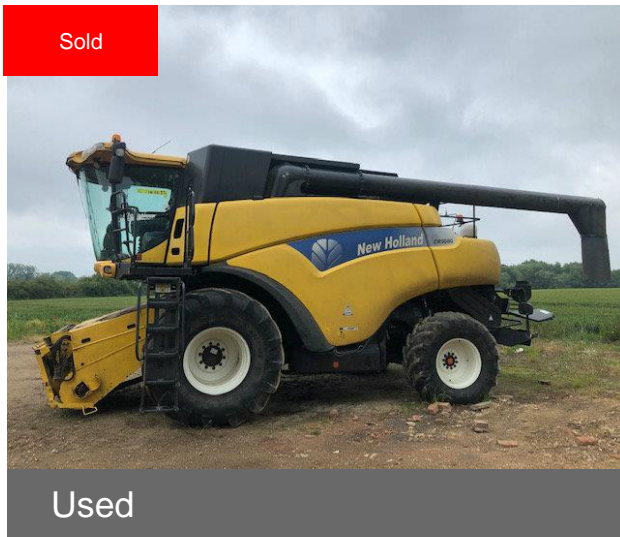


New Holland CR9080 ELEVATION



Contact details for Dealer

| | |
|-------------------|--------------------|
| Branch: | Luton |
| Branch Phone: | +44 (0)1582 727111 |
| Contact: | William Helliwell |
| Mobile: | +44 (0)7894 698202 |
| Stock number: | 11012979 |
| Export Enquiries: | +44 (0)7894 698202 |

Machine Specifications

| | |
|-----------------------------|---------------------------------|
| Price | SOLD |
| Year | 2008 |
| Make | New Holland |
| Model | CR9080 ELEVATION |
| Stock Number | 11012979 |
| Engine Hours | 2701 |
| Cutterbar Type | NH Varifeed cutterbar |
| Cutterbar size (m) | 9 |
| Drum Hours | 2173 |
| Sieves | Leveling |
| Drive Type | Hydro |
| Road Speed (kph) | 25 |
| Front Tyre Size / Condition | Michelin MegaXBib 800/60R32 80% |
| Rear Tyre Size / Condition | 600/65R20 Pirelli 80% |
| Condition | Good |
| RH V Knife | ✓ |
| Header Reverse | ✓ |
| Air Conditioning | ✓ |
| Yield Meter | ✓ |
| GPS Steering | ✓ |
| Straw Chopper | ✓ |
| Chaff Spreader | ✓ |
| Yield Mapping | ✓ |

Additional Information:

New Holland CR9080 Elevation, Year 2008, Intelliview II screen, 2699 / 2173 hrs, Michelin 800/60R32 80% good, 600/65R20 Pirelli, GPS steering, Yield mapping, Intellicruise, PSD Straw discharge belt, Spout extension sock, Varifeed 30' cutterbar, Yer 2008, AS Marston Trolley - Serial no: 211543, Extendable drawbar, Tandem axle